

## **Historic, Archive Document**

Do not assume content reflects current scientific knowledge, policies, or practices.



62.09

FOR OUR CUSTOMERS ONLY!  
Special Sale  
REDUCED PRICES



on  
**HIBISCUS  
PELARGONIUMS**  
FINE COLLECTION  
of  
**FUCHSIAS**  
**HYDRANGEAS**  
Lovely French Hybrids  
**UNUSUAL SHRUBS**  
TREES, VINES

and  
**HARD TO GET ITEMS**  
June, 1949

Hibiscus

# Juttle Bros. Nurseries

729 Atlanta Street, Altadena

MAIL: Station C, Box 126  
Pasadena 6, California

Telephone SYcamore 7-1177

Postmaster: Return Postage Guaranteed.

LIBRARIAN  
U. S. DEPT. AGRICULTURE  
Washington 25  
D. C.

62 P. L. & R.  
U. S. Postage

**LIBRARY  
RECEIVED**

JUL 21 1949

**PAID**

★ Pasadena, Calif.  
Permit No. 686

U. S. Department of Agriculture

**SUBSTANTIAL SAVINGS**  
**in HIBISCUS and PELARGONIUMS**  
**THESE LOW PRICES IN EFFECT THROUGH**  
**JULY 15 ONLY**

**HIBISCUS**

At this price you can afford to replace all those plants you lost in last winter's freeze. Remember, Hibiscus, except in very cold areas, are only badly injured in about one year out of ten. 1-gal., 89c

**Agnes Gault.** Largest, most lovely and fastest growing of the pink varieties.

**Brilliante.** Richest of the single reds.

**Double Orange.** Perfectly formed flowers of deep bronzy orange.

**Kona.** Double pink bloom in astonishing quantities. Rapid growth.

**Single Apricot.** Medium sized single bloom. Moderate growth.

**PELARGONIUMS**

An excellent selection of the better varieties at more than 25% discount. 2½-inch pots, each, 26c



**Pelargonium**

**Azalea.** Large flowered rosy red. Upper petals darker than lower. Strong grower.

**Belladonna.** A remarkably lovely shade of rosy red.

**Carmine King.** Large ruffled bloom of carmine red, dark red blotches. Compact growth.

**Diener's Giant.** Extremely large salmon pink bloom, the upper petals marked with red.

**Easter Greeting.** Bright red flowers, each petal marked with large maroon blotch. Blooms early and long.

**Edith Cavell.** Extremely striking blush white with dark markings on all petals.

**Gardener's Joy.** Pale blush white, upper petals marked with dark red blotch bordered with rose. Striped lower petal. Sensational.

**Gladys Kellogg.** Salmon blotched brownish maroon, with trace of violet in center.

**Mary Bard.** Glowing white except for a few small cerise markings near center.

**Marie Rober.** Large ruffled bloom of deepest maroon.

**Marie Vogel.** Large flowers of red shaded salmon, with dark blotches on the upper petals. Very early bloomer.

**Montecito.** Exquisite flesh pink.

**Salmon Queen.** Salmon coral with white center. Upper petals splotted scarlet.

**San Diego.** Ruffled purple. Early and heavy bloomer.



# FUCHSIAS

## HARDY UPRIGHT TYPES as well as TRAILING SORTS

For summer and fall color few shade plants equal the Fuchsias. They produce their spectacular bloom through many months, bear heavily and both the upright and trailing or basket varieties have exceptional foliage. A few trailers in baskets, hung about the patio, will make it much more livable.

### TRAILING VARIETIES, 4-inch pots, 65c

**Marinka.** Semi-double bloom in two lovely shades of red. Dark, glossy foliage.

**Muriel.** A thrilling, large single variety with scarlet sepals and twisted petals of rosy lilac. Long graceful drooping branches.

**Nonpareil.** A unique combination of ivory pink sepals and semi-double corolla of pale purple. Easily grown.

**Patty Evans.** Waxy white to rose sepals and glowing double corolla of white, flushed pink.

**R. A. F.** Shapely medium sized bloom, double white to pink corolla, red sepals. Outstanding!

**Whitemost.** Large, semi-double white bloom of waxy texture. Pale pink sepals.

**SPECIMEN TRAILING FUCHSIAS IN BASKETS. Assorted colors, \$7.25.**

### UPRIGHT VARIETIES

#### 4-inch pots, 65c

**Catalina.** Vigorous growth to 5 feet. A remarkably successful variety. Double white, with splashes of red at base; carmine sepals.

**Chief.** Huge double purple streaked with red. Dark red sepals. Sturdy tall growth.

**Diament.** Large double white streaked with carmine. Scarlet sepals. Heavy bloom.

**Gypsy Queen.** Enormous double rose-mauve with deep red sepals. Exceptionally vigorous.

**Hollydale.** A marvelous Fuchsia in any garden. Double pink with dark pink sepals.

**New Fascination.** Very large double bloom, of loose formation, in rose pink with red sepals. Profuse bloom.

**Otto.** Single violet blue, bell-shaped. Deep crimson sepals. We recommend it.

**Santa Monica.** Double pink, red sepals. Late bloomer. Grows to only 3 feet, so requires little space.



**Fuchsia**

## HYDRANGEAS

1-gal., 90c; 5-gal., \$3.00.

Planted on the east or north sides of buildings or in any spot where they are shaded during the hottest part of the day these luxuriantly foliaged shrubs will thrive and thrill you with their many enormous heads of exquisite color.

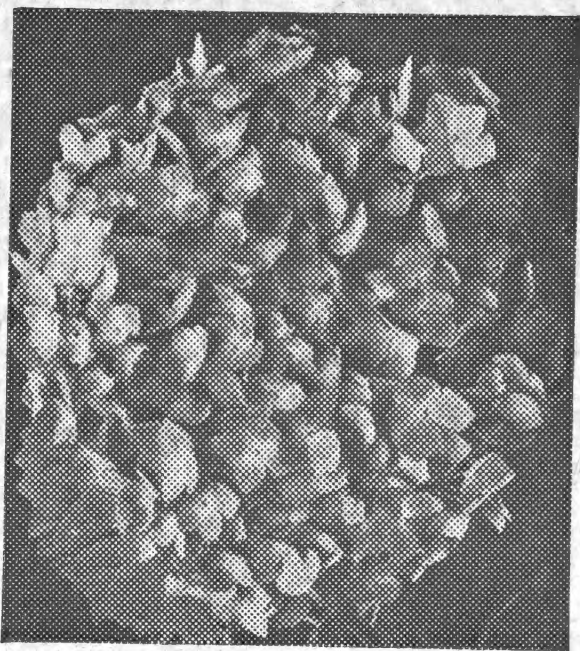
**Emile Mouillere.** Great big large flowered heads of frosty white.

**Europa.** Clear compact flowers of satiny salmon pink.

**Kunert.** A lovely shade of clear blue.

**Mrs. Beardse.** An unusual and striking shade of salmon red.

**Macrophylla.** Grows rapidly to large size. Polished foliage and big heads of small flowerets that vary from pink to lavender.



Hydrangea

## COLORFUL PERENNIALS

for

## SUMMER BLOOM

**Agapanthus.** Blue Lily of the Nile. Produces in early summer above attractive evergreen foliage, huge compact heads of bold blue. 1-gal., 75c

**Ivy Geranium.** Provide many months of exceptional color in pots, window boxes, on banks or in parkings.

1-gal., 65c; Flats of about 100 plants, \$8.20.

We grow a full assortment of colors, **Lavender, Pink, Red, Purple, White.**

**Carnations.** The following are all of the finest large flowered strains. They'll give you months of colorful, fragrant bloom. All are in 2½-inch pots:

**Arundel.** Clearest waxy white. Long lasting when cut. 40c.

**Dairy Maid.** White, marked with intriguing pink stripes. 40c.

**Dorothy Ann.** A very lively shade of watermelon red. 40c.

**Georgiana.** White marked with thin red stripes. 40c.

**Golden Wonder.** Clear yellow with faint pink stripes. 40c.

**John Briry.** A clear even tone of deep pink. 30c.

**Miller's Yellow.** Clear yellow, without shading. 50c.

**Princess.** Dark satiny pink. 40c.

**Ginger Lily.** *Hedychium flavum.* Produce in late summer and fall big clusters of exotic pale yellow bloom. Heavenly fragrance. Lush foliage.

1-gal., \$1.25.

**Hosta japonica.** Plantain Lily. A most useful plant in the shade garden. Broad lance-like leaves in compact clumps and dainty lilac colored bloom on slender stems.

1-gal., \$1.25.

**Japanese Iris.** Aristocratic, broad petaled bloom to 6 inches across, in amazing colors and combinations. Each petal is delicately and artistically veined.

1-gal., 75c.



**Marguerites.** Yellow or White. Either in pots or in the sunny garden they will bloom through most of the year. 1-gal., 50c.

**Penstemon.** Keep the old flower stems removed and they'll supply you a surfeit of big funnel-shaped bloom from now until frost. We grow: **Flamingo**, Intense red; **Glowing Purple**. 1-gal., 65c.

**Shasta Daisies.** Big lasting white bloom for cutting. And how they do bloom. 1-gal., 65c.

**Chiffon.** Flat bloom daintily quilled. Most lasting when cut.

**Esther Reed.** Compact bloom, heavily double.

**Marconi.** Largest of all. Double frilled bloom on long stems.

## EXOTIC VINES

**Right now most good vines are mighty scarce. You'll find this an excellent opportunity to replace vines lost during the cold spell, last winter.**

**Bignonia violacea.** Big violet trumpets heavily veined with red. Polished foliage. Moderately fast growth. 1-gal., \$1.25; 5-gal., \$3.50.

**Bougainvillea.** All varieties. 1-gal., \$1.50; 5-gal., \$4.00.

**Barbara Karst.** Glowing red. Rapid growth.

**Brasiliensis.** Magenta. Hardest to frost.

**Crimson Lake.** Lively crimson.

**Carolina Jasmine.** The first vine to bloom in spring. Golden yellow mildy fragrant bloom in profusion. Dense, polished growth.

1-gal., \$1.00; 5-gal., \$3.50.

**Cup of Gold.** Grows unbelievably fast. Its huge polished leaves make a dense cover. Enormous golden bloom. 1-gal., \$1.25.

**Giant Honeysuckle.** Covers quickly with its bold glossy foliage. Its large yellow bloom is delightfully scented.

1-gal., \$2.50; 5-gal., \$4.50.

**Guinea Flower.** Forms a dense glossy cover in any sunny spot. Large flat attractive yellow bloom.

1-gal., \$1.25; 5-gal., \$3.50.

**Mexican Blood Trumpet.** No more spectacular vine than this. Huge orange-red trumpets. Rapid growth. 5-gal., \$3.50.

**Star Jasmine.** Dark polished foliage and clouds of delightfully fragrant waxy white bloom. Moderately slow growth.

1-gal., \$1.50; 5-gal., \$3.50.

**Tecomaria capensis.** Glistening foliage and loose heads of orange-scarlet bloom during cool weather.

1-gal., \$1.25; 5-gal., \$3.50.



**Matilija Poppy**

## TREES of DISTINCTIONS

**Outstanding trees for color, patio use or to provide shade. All trees are evergreen unless noted otherwise.**

**Brazilian Pepper.** Small flat headed tree with fern-like foliage that is ideal to shelter the small patio. 5-gal., \$3.50.

**California Alder.** The last tree to lose its leaves in fall and the first to leaf out in spring. Big cool leaves; dense, sturdy and rapid growth. 5-gal., \$3.75.

**Coral Tree.** At each stage of summer growth the top foot or so of every branch is aflame with big, pea-shaped, coral-red bloom. Deciduous. 1-gal., \$1.25; 5-gal., \$4.00.

**Eucalyptus citriodora.** The lofty, white, arrow-like trunk and slender drooping terminal branches form a picturesque appearance against the sky. 5-gal., \$3.50.

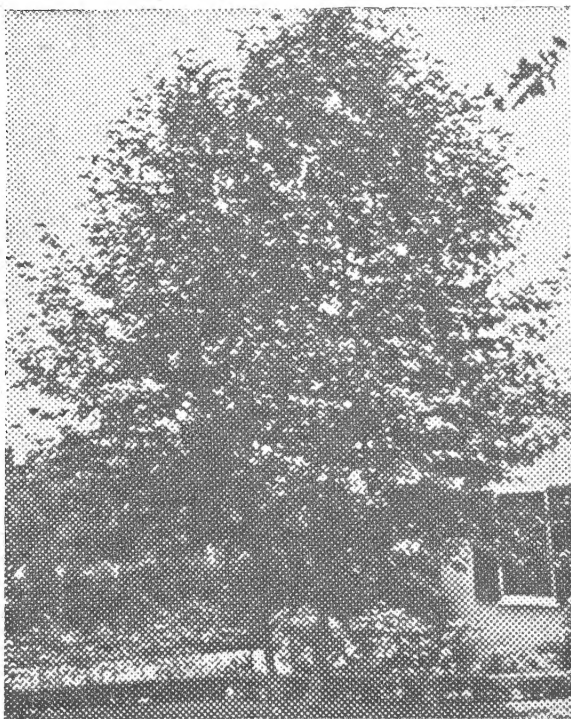
**Evergreen Elm.** Most graceful and popular for the lawn area. 5-gal., \$4.50.

**Grevillea robusta.** Forms a conical tree clothed in soft, ferny foliage that, particularly in its younger years, is a picture of symmetry and refinement. 5-gal., \$3.50.

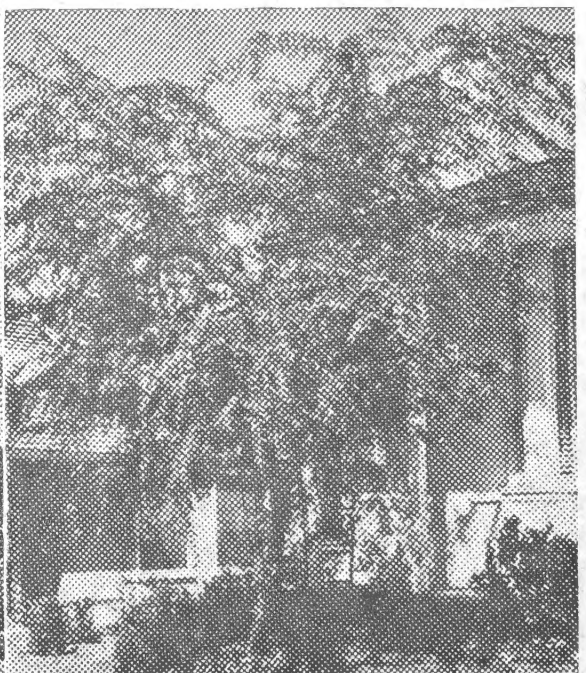
**Jacaranda.** Airy foliage and a wealth of spectacular blue flowers in late spring. 5-gal., \$3.50.

**Orchid Tree.** *Bauhinia purpurea.* Bright green, butterfly-shaped leaves and in April a multitude of orchid-like bloom varying from pink to lavender. 5-gal., \$3.75.

**White Orchid Tree.** *Bauhinia candicans.* Similar to the foregoing variety except that the tree grows larger and has white bloom in terminal clusters. 5-gal., \$3.75.



**California Alder**



**Evergreen Elm**



## SHRUBS

**Unusual colorful and hard to get items at right prices.**

**Abelia Goucher.** Because of its small size—it grows to only three feet or so—polished bronzy foliage, its habit of displaying handsome pink bells all summer this newer shrub is becoming increasingly popular.

1-gal., 90c; 5-gal., \$3.00.

**Bouvardia Albatross.** The improved variety. Big waxy white bloom, exotic fragrance in addition.

1-gal., \$1.25.

**Bouvardia Coral.** As bright as the sparkle in a youngster's eye.

1-gal., \$1.25.

**Bird of Paradise.** Extravagant tropical bloom in orange and blue.

1-gal., \$2.00; 5-gal., \$5.00.

**Brunfelsia.** Yesterday and Today. Today blue, "manana" lavender, day after white—unusual, to say the least, and delightful fragrance, too.

1-gal., \$1.25; 5-gal., \$3.75.

**Burford Holly.** Not only bears the largest berries of any of the Hollies but is the most easily grown as well. Gleaming light green foliage, bushy growth.

1-gal., \$1.35; 5-gal., \$4.00.

**California Holly.** One of our most impressive native shrubs. Clouds of white spring bloom and big clusters of brilliant red berries in winter.

1-gal., \$1.25; 5-gal., \$3.50.

**Canary Bird Bush.** Large, chartreuse, bird-like bloom in summer. Rapid growth.

1-gal., \$1.25; 5-gal., \$3.50.

**Carissa grandiflora.** A much wanted and hard to get item right now.

1-gal., \$1.00; 5-gal., \$3.25.

**Catalina Cherry.** One of our most useful large shrubs for screen, hedge or specimen. Good ones are scarce. We have 'em.

1-gal., 85c; 5-gal., \$3.00.

**Ceanothus gloriosus.** A polished spreading shrub of prostrate habit that covers itself with countless spikes of lavender blue.

1-gal., \$1.25; 5-gal., \$3.25.

**Chinese Plumbago.** *Ceratostigma willmottianum*. From mid-summer until winter this amazing, 3-foot shrub is a study in vivid blue.

1-gal., \$1.00.

**Eugenia.** For hedge or trimmed specimens. 1-gal., 75c; 5-gal., \$4.00.

**Fremontia.** Furry brown tinted maple-like leaves and big single golden yellow bloom through several summer months. 1-gal., \$1.25; 5-gal., \$3.50.

**Gardenia Mystery.** Finest, largest and most easily grown of the Gardenias.

1-gal., \$1.00.

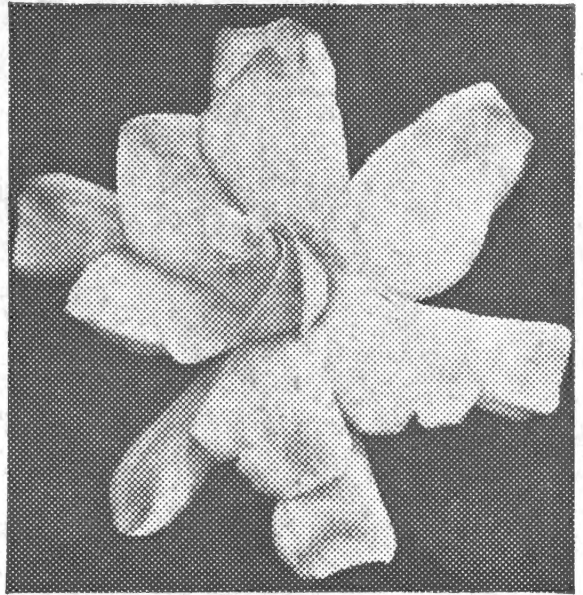
**Geraldton Wax Flower.** Large airy shrubs; clusters of fragrant pink bloom that last for weeks when cut.

1-gal., \$1.25; 5-gal., \$3.50.

**Hibiscus Crown of Bohemia.** Yellow, gold, bronze and cerise. Most prized of all double Hibiscus.

1-gal., \$2.00; 5-gal., \$5.00.

**Hibiscus Double Yellow.** 1-gal., \$2.00; 5-gal., \$5.00.



**Mystery Gardenia**

**Lantana.** For all summer bloom. We grow **Orange, Pink, Yellow, White** and the **Trailing Lavender** variety. 1-gal., 65c.

**Manchu Cherry.** Clouds of white to light pink spring blossoms and edible cherries, all on a 6 to 8 foot bush. 5-gal., \$3.50.

**Matilija Poppy.** Enormous fragrant crepe-paper-like bloom in early summer. 1-gal., \$1.50; 5-gal., \$3.50.

**Ochna multiflora.** Quantities of small yellow spring bloom, polished foliage and in winter fiery red seed carpels exhibit big jet black seeds. 1-gal., \$1.50; 5-gal., \$3.50.

**Princess Flower.** Big, velvety, red tinted foliage and 3-inch single summer bloom of royal purple. 1-gal., 85c; 5-gal., \$3.00.

**Summer Sweet.** Jewel-like white bloom in glowing terminal racemes in early summer. Exotic fragrance. 1-gal., \$1.00; 5-gal., \$3.25.

**Tree Fern.**

1-gal., \$1.50; 5-gal., \$6.00.

**Trinidad Flame Bush.** Big erect tufts of glowing scarlet through several months. Ferny foliage. 1-gal., \$1.25; 5-gal., \$3.75.

**Xylosma.** Forms a mound of glistening foliage that is unaffected by extremes of temperature. May be easily trained on a wall, too. 1-gal., \$1.00; 5-gal., \$3.25.



**Burford Holly**

# Tuttle Bros. Nurseries

729 Atlanta Street, Altadena

Open Sundays

Phone SYcamore 7-1177

Mail Address: Station C, Box 126, Pasadena 6, Calif.